

# TruPortal™ Access Control

## 2-Door Base System



### OVERVIEW

TruPortal offers an IP Appliance-Based Access Control System integrated with the TruVision™ line of video products. Designed for the over-the-counter market, this solution is also ideal for small- to medium-sized commercial buildings. The easy-to-install system features a browser-based interface that does not require specialized training, additional software or licensing. Plus, a companion iPad app enables users to remotely monitor system activity and perform basic administrative tasks, such as adding or deleting users.

The system provides up to five clients simultaneously with real-time information, event monitoring and video integration. A user-friendly interface, online help files, built-in tool tips, intuitive searching and flexible reporting methods all ensure a frustration-free user experience. The interface is available in five languages: English, Dutch, French, Spanish and Portuguese.

TruPortal also allows hardware interfacing with five digital inputs for unlocking doors in case of emergency, while pre-configured roll-call reports enable easy verification of persons still on the premises. Integration with two separate video products (TVR 10 and TVR 30) provides in-browser video verification and alarm tagging.

End-user administration of the system is made easy with built-in wizards that guide the administrator through the different setup screens, as well as items like Access Levels, Schedules, Holidays and Reader Lists. The access control database features 10 customizable user-defined fields. Multiple levels of operators can be configured, with five levels incorporated by default.

### STANDARD FEATURES

- Web-based application without additional software or licensing
- Seamlessly links video to access control system
- Video can be viewed and controlled via browser
- Monitor and control up to 132 inputs and 66 outputs
- iPad app allows remote access and monitoring
- Simple system installation requires no special training
- User-friendly interface and built-in configuration wizards
- Hardware discovery on initial and subsequent hardware installations
- Utility for Import/Export of cardholders
- FCC, Class A and CE compliant
- Supports up to 10,000 persons and 10,000 credentials with five credentials per person
- Supports up to 64 access levels with eight levels of access per credential
- Supports up to 64 schedules with six intervals per schedule
- Supports up to 64 reader groups, 32 operator roles, eight free configurable card formats, and 64 readers or doors in a flexible configuration
- Supports DVRs: TVR 10 and TVR 30 with a maximum of 32 cameras and maximum four DVRs

## Key Functions



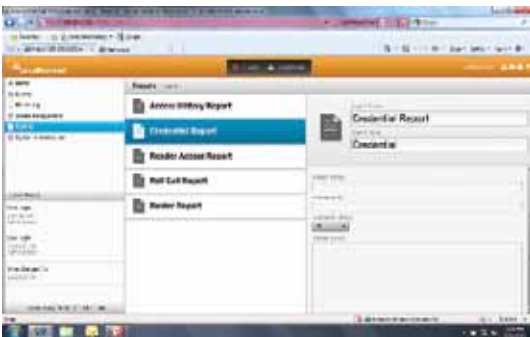
### Installation/Ease of Use Features

Wizards walk users through installation and other common tasks, while Tool Tips provide descriptions of system features.



### Customizable Configuration

Cardholder database offers customized fields to track and generate reports.



### Reports

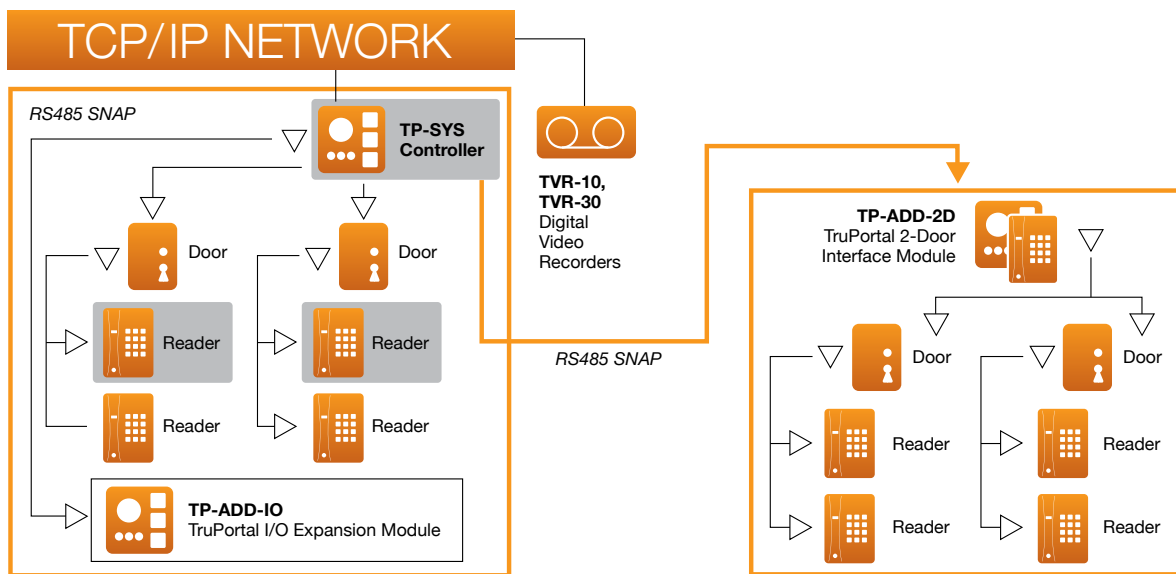
Easily customize reports and filter based on individuals, locations or times.



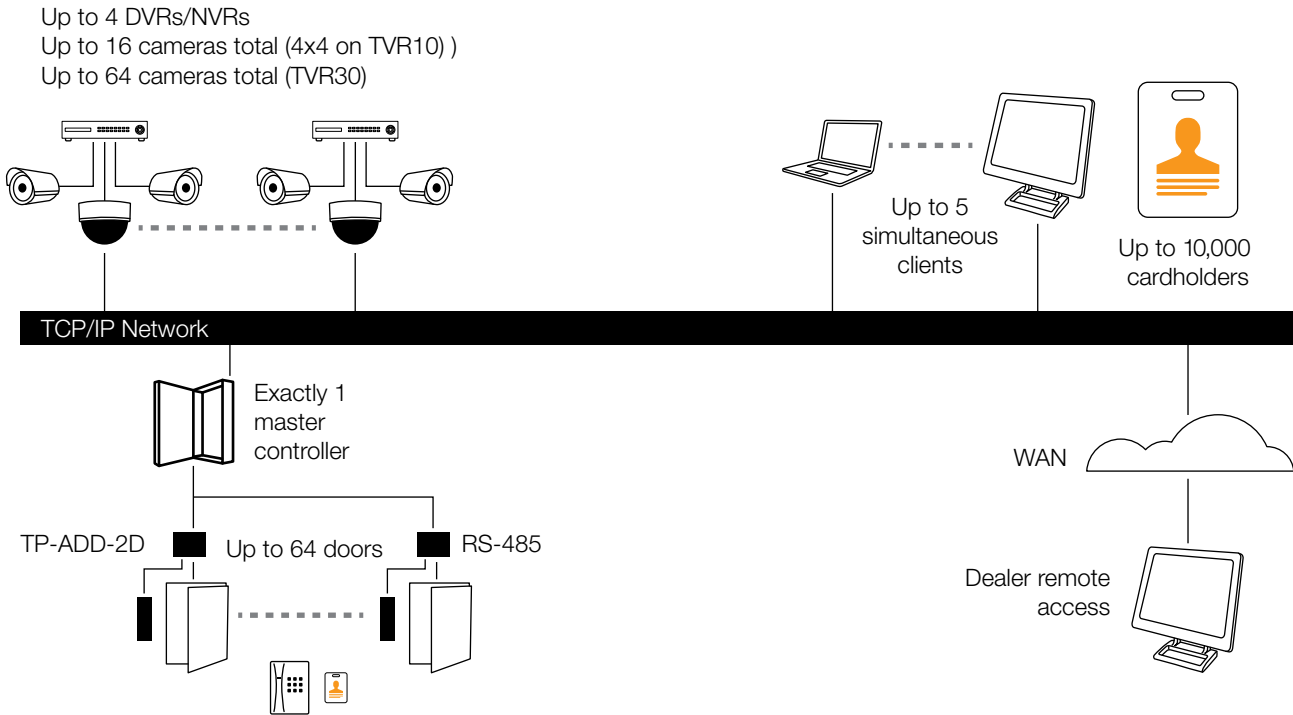
### Seamless Video Integration

Associate and control video related to access control system events

## System Diagram



## Application Drawing



## Specifications

### Description

<b>Cardholders and Credentials</b>	Up to 10,000 total (Up to 5 credentials per cardholder)
<b>Doors and Readers</b>	Expandable to 64 doors or 64 readers
<b>Access Levels</b>	64 total (Up to 8 per credential)
<b>Anti-Passback</b>	Up to 64 areas (Hard/Soft modes configurable per reader)
<b>Event History</b>	65,000 historical events
<b>Schedules and Holidays</b>	64 schedules/255 Holidays
<b>Enclosure Size (WxHxD)</b>	21-1/4 x 13-5/8 x 4-1/4 in.
<b>Certifications</b>	UL, RoHS, CE
<b>Hardware Recommendation</b>	Intel Pentium 4 2.8 GHz Processor 1 GB of Memory 512 MB Video Card 1 GB Free Disk Space 10/100 Ethernet Network Interface Card 1024 x 768 screen resolution
<b>Video Performance</b>	Directly depends on the available RAM and the processor.
<b>Software Requirements</b>	Microsoft Windows XP SP3 32-bit, or Microsoft Windows 7 32- and 64-bit IBM-Compatible PC Bonjour Print Services .NET 4.0 Framework Adobe Flash plug-in 10.6+

<b>Supported Reader</b>	Info to come
<b>Supported Credential Technologies</b>	125 kHz 13.56 MHz(ISO 1569 &14443A, B)
<b>Supported Proximity Cards</b>	GE Proximity HID Proximity HID Proximity Corp. 1000
<b>Supported Smart Cards</b>	MIFARE (ISO 14443A) card serial number (CSN) MIFARE/DESFIRE CSN Vicinity (ISO 15693) CSN HID iClass CSN
<b>Supported Digital Video Recorders</b>	DVR 10 DVR 30 DVR 31
<b>Supported Browsers</b>	Windows Internet Explorer Version 7, 8 (video features only supported with IE, Recommend IE8) Chrome, version 8 Safari, version 5 FireFox, version 3.6

# TruPortal™ Access Control

## 2-Door Base System

North America  
T 855-286-8889

Asia  
T 852-2907-8108

Australia  
T 61-3-9239-1200

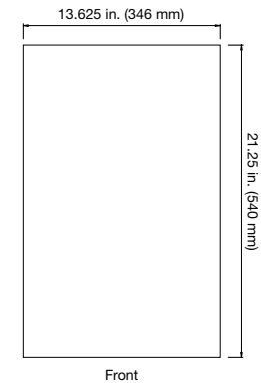
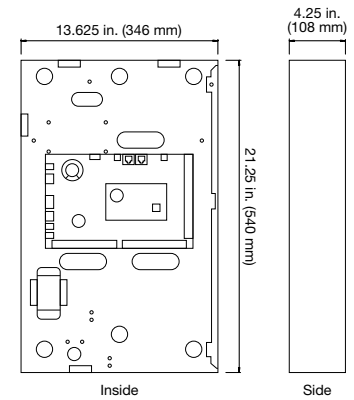
Europe  
T 32-2-725-11-20

Latin America  
T 561-998-6100

### Ordering Information

Base Systems	
<b>TP-SYS-2D</b>	TruPortal™ 2-Door base kit. Consists of a TruPortal System Controller installed in UL listed enclosure w/ integrated power supply/standby battery charger.
<b>TP-SYS-2D2R</b>	TruPortal 2-Door base kit with readers. Consists of a TP-SYS-2D bundled w/ 2 readers and 5 credentials.
<b>TP-SYS-BRD</b>	TruPortal System Controller. For spare parts only.
Add-Ons	
<b>TP-ADD-2D</b>	TruPortal 2-Door Add-on kit. Consists of a TruPortal 2-Door Interface Module installed in UL listed enclosure w/ 4 AMP power supply.
<b>TP-ADD-2D2R</b>	TruPortal 2-Door Add-on kit with readers. Consists of a TruPortal 2-Door Interface Module installed in UL listed enclosure w/ 4 AMP power supply. Includes 2 Readers.
<b>TP-ADD-2D-BRD</b>	TruPortal 2-Door Interface Module. Board only.
<b>TP-ADD-IO</b>	TruPortal I/O Expansion Add-on kit. Consists of a TruPortal 16 input, 8 output I/O Expansion Module installed in a UL listed enclosure w/ 4 AMP power supply.
<b>TP-ADD-IO-BRD</b>	TruPortal I/O Expansion Module. Board(s) only. 16 inputs and 8 relay output (consists of 2 separate but interconnected boards). For spare parts or for installation into an existing TP-SYS-2D
Readers	
<b>TP-RDR-100A</b>	T-100 Reader. Standard pigtail. 3 Covers.
<b>TP-RDR-200A</b>	T-200 Reader. Standard pigtail. 3 Covers.
<b>TP-RDR-525</b>	T-525 PIN Reader
Accessories	
<b>TP-RDR-LRN</b>	Dual Frequency Enrollment Reader
Credentials	
<b>TP-PRX-CLAM-50PK</b>	TruPortal Credential - HID Proxcard II Clamshell Design Cards - 50 Pack
<b>TP-PRX-KF-50PK</b>	TruPortal Credential - HID Prox Keyfobs - 50 Pack
<b>TP-PRX-ISO-50PK</b>	TruPortal Credential - HID Prox ISO Cards - 50 Pack
<b>TP-MFC-ISO-50PK</b>	TruPortal Credential - MIFARE Classic ISO Cards no Magstripe Gloss/Gloss - 50 Pack
<b>TP-MFC-ISOM-50PK</b>	TruPortal Credential - MIFARE Classic ISO cards 2750OE Magstripe Gloss/Gloss - 50 Pack
<b>TP-MFC-KF-BK-25PK</b>	TruPortal Credential - MIFARE Classic Keyfobs Piano Black - 25 Pack
<b>TP-MFC-KF-RD-25PK</b>	TruPortal Credential - MIFARE Classic Keyfobs Piano Red - 25 Pack
<b>TP-MFC-KF-OG-25PK</b>	TruPortal Credential - MIFARE Classic Keyfobs Piano TruPortal Orange - 25 Pack
<b>TP-MFC-KF-LG-25PK</b>	TruPortal Credential - MIFARE Classic Keyfobs Epoxy Slender - TruPortal Orange - 25 Pack
<b>TP-CP-KF-BK-25PK</b>	TruPortal Credential - Casi Prox Keyfobs Piano Black - 25 Pack
<b>TP-CP-KF-RD-25PK</b>	TruPortal Credential - Casi Prox Keyfobs Piano Red - 25 Pack
<b>TP-CP-KF-OG-25PK</b>	TruPortal Credential - Casi Prox Keyfobs Piano TruPortal Orange - 25 Pack
<b>TP-CP-KF-LG-25PK</b>	TruPortal Credential - Casi Prox Keyfobs Epoxy Slender - TruPortal Logo - 25 Pack

### Dimensional Diagram



Specifications subject to change without notice.

© 2012 Interlogix. All rights reserved.

203-3509 2012/04 (69334)



interlogix.com